

SYNTESI FENIX NTM



Fianchi a Vista
FINISHING SIDES
COTES FINIS



Seta



Tortora

Struttura > > > >
STRUCTURE
STRUCTURE



BIANCO
WHITE _ BLANC



Creta

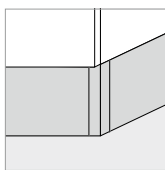


Fianchi a vista
disponibili anche in colori ante

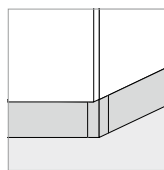
FINISHING SIDES ALSO AVAILABLE IN
SAME COLOR AS DOORS

COTES VISIBLES EGALEMENT
DISPONIBLES EN COULEURS PORTES

Zoccoli > > > >
PLINTHS
SOCLES

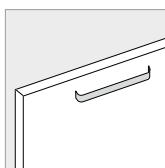


Zoccolo h. 15 cm
h. 12 cm a richiesta
PLINTH H. 15 CM
H. 12 CM ON REQUEST
SOCLE H. 15 CM
H. 12 CM SUR DEMANDE

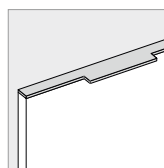


Zoccolo h. 8 cm
PLINTH H. 8 CM
SOCLE H. 8 CM

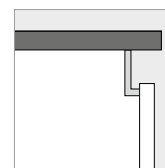
Sistemi di apertura > >
OPENING SYSTEMS
SYSTEMES D'OUVERTURE



Maniglia esterna
EXTERNAL HANDLE
POIGNÉE EXTERIEURE



Maniglia bordo anta
HANDLE EDGE ON DOOR
POIGNÉE SUR CHANT DE PORTE



Gola
GROOVE
GORGE



Modello con tempi di attesa
Model with longer delivery time
Modèle avec temps d'attente

Ante Vetro
GLASS DOORS
PORTES VITRES



Telaio alluminio satinato
SATINATED ALUMINIUM FRAME
CADRE ALUMINIUM SATINE



Telaio alluminio spazzolato
BRUSHED ALUMINIUM FRAME
ALUMINIUM BROSSE CADRE

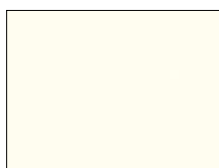
Ante
DOORS . PORTES



Spessore 2 cm, realizzate in pannelli di particelle di legno ricoperte in laminato FENIX NTM, bordate in Unicolor Fenix, spessore 0,1 cm.

2 CM THICK, E1 CLASS CHIPBOARD COVERED BY FENIX NTM LAMINATED, FENIX UNICOLOR RIMMED 0,1 CM THICK.

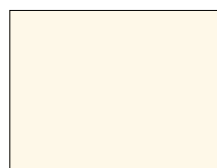
EPAISSEUR 2 CM, REALISEE EN PANNEAU DE PARTICULES DE BOIS REVETUE EN STRATIFIE FENIX NTM. BORDEE EN UNICOLOR FENIX EPAISSEUR 0,1 CM



0032 Bianco Kos



0030 Bianco Alaska



0029 Bianco Malè



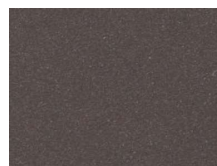
0719 Beige Luxor



0717 Castoro Ottawa



0748 Beige Arizona



0749 Cacao Orinoco



0718 Grigio Londra



0725 Grigio Efeso



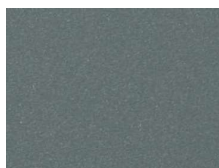
0752 Grigio Antrim



0724 Grigio Bromo



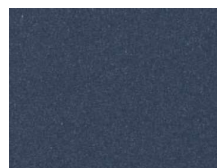
0720 Nero Ingo



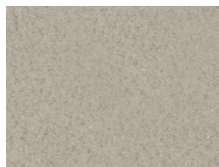
0750 Verde Comodoro



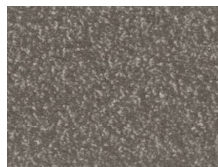
0751 Rosso Jaipur



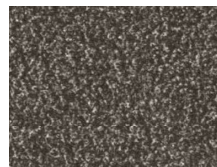
0754 Blu Fes



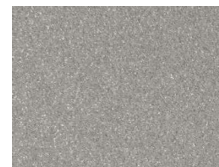
2628 Zinco Doha



2629 Bronzo Doha



2630 Piombo Doha



2636 Titanio Doha